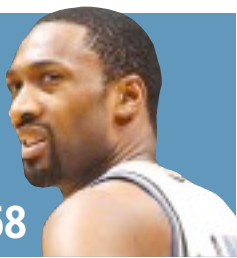


Game over for Gil
 Wiz guard suspended
 for rest of season **PAGE 58**



TIME OUT! Weekend
 Exit Clov has homecoming
 for CD release party **PAGE 31**



washington**examiner**.com

The Examiner
 WASHINGTON*

THURSDAY
 JANUARY 28, 2010

Spot of sun
 46° 28°

 Partly cloudy. **PAGE 63**

WHITE HOUSE

Obama makes pitch for jobs
 In annual address, he also calls for an end of military's ban on gays. **PAGE 16**

ECONOMY

Apple unveils iPad computer
 Tablet set to start at \$499. **PAGE 20**

CHRIS STIREWALT

'Choose life' ad enrages Left
 Tebow spot makes a stir, but racy ones don't.



PAGE 15

A new face for the GOP

Va. governor answers Obama on national TV



P. 5



12 Piece Package!

**SOFA! CHAIR! COCKTAIL TABLE! 2 LAMP TABLES! 2 LAMPS!
 PLUS 5-Pc DECOR ACCESSORY SET!**

\$599⁹⁹

JENNIFER
 SOFAS & SOFABEDS

TIME OUT!

THEATER
'Orestes: A Tragic Romp'



Folger updates Euripides' classic play.

PAGE 34

FOOD & WINE

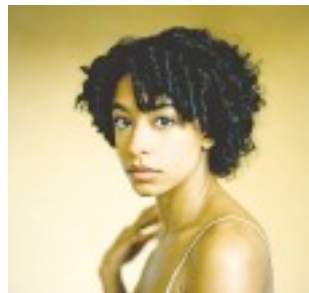


ANDREW HARNIK/EXAMINER

'No food snobs'

Nage's young chef brings simple food to D.C. **PAGE 29**

NIGHT IN



COURTESY PHOTO

Intimate 'Sea'

Follow-up from Rae laced with emotions. **PAGE 30**

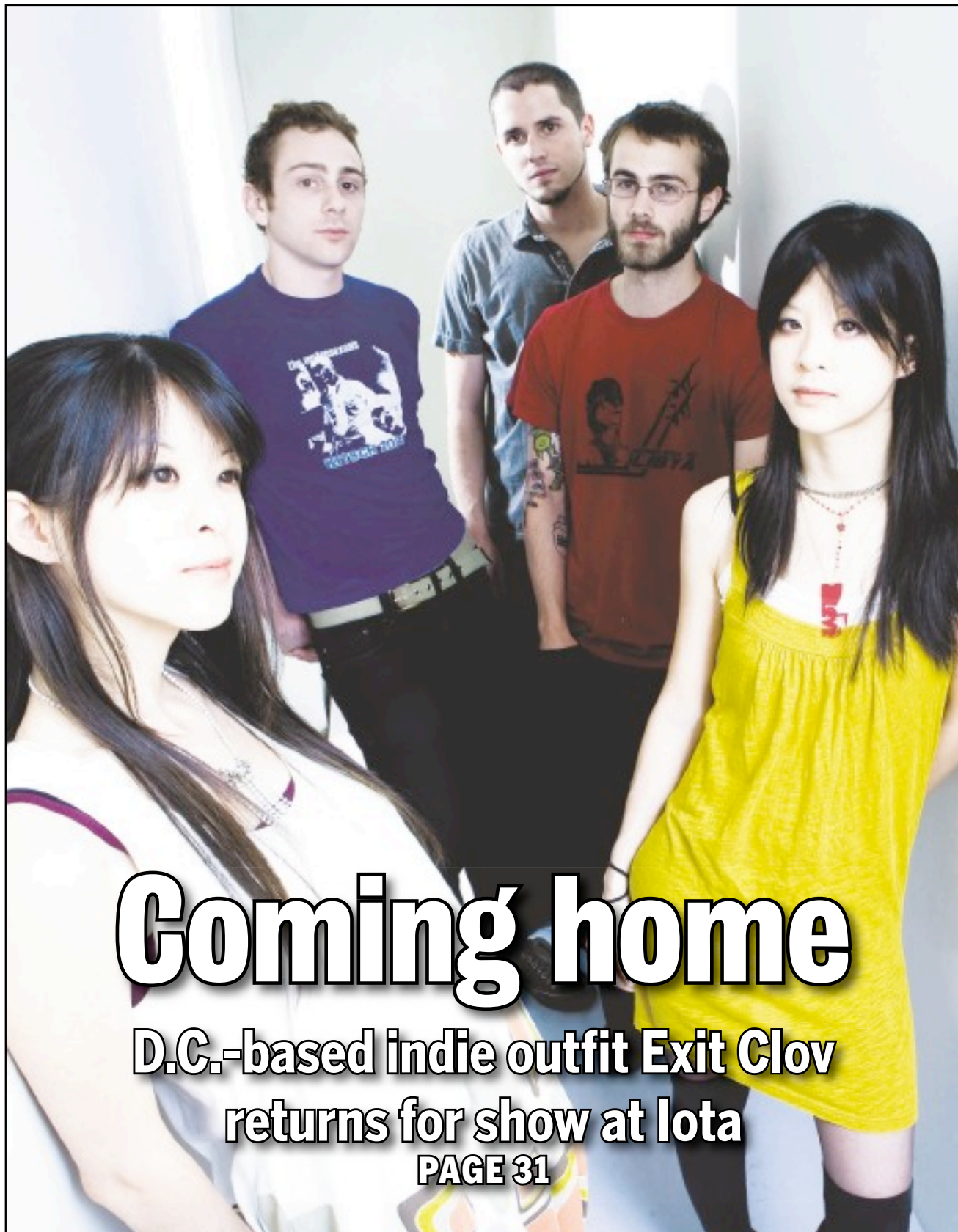
VINE GUY



COURTESY PHOTO

Vintage hero

Port shines as one of the forgotten wines. **PAGE 29**



Coming home

D.C.-based indie outfit Exit Clov returns for show at Iota

PAGE 31

THE LIST



D.C.-based indie band Exit Clov is coming home for a CD release party Saturday at Iota in Arlington.

COURTESY PHOTO

D.C.-based Exit Clov returns home for party

By Nancy Dunham
Special to *The Examiner*

Maybe it was karma, fate or divine intervention.

But whatever led three student musicians to informally meet two classically trained violinists gave rise to Exit Clov, a D.C.-based indie rock band with a loyal following that continually flirts with a major breakthrough. Not that the band members dwell on big-time status.

"That is why it has worked for seven years now," bassist Brett Niederman said of the individual members' various pursuits — including audio engineering. "We each are accommodating other interests, and that lets us grow together. We almost function like a little record label."

Although the band members are now akin to a family, it took a bit for the members to meld their individual talents into a collective identity. Perhaps that's because the women were into a Brit/pop sound while the men were more into the 1960s and 1970s

IF YOU GO Exit Clov CD Release Party

» **Where:** Iota, 2832 Wilson Blvd., Arlington
» **When:** 9 p.m. Saturday
» **Info:** \$10, no advance sales, 703-522-8340; iotacuband-cafe.com

Jamaican reggae sound. The collaborative sound — which has won critical acclaim — is explosive with one critic commenting on the group's "addictive rhythms and dynamic range."

The band's just-released new album — "Memento Mori" — is no exception. The difference, though, is the music has a more richly textured sound that shows a relaxed maturity. Consider "Strippers & Politicians" filled with exotic, Far Eastern influences accented by violins or even "The Hate," filled with haunting melodies and New

Age appeal.

"In this album we opened it up and tried a lot of experimentation," violinist/guitarist and vocalist Susan Hsu said. "The result was some different sounds [some of which include] big outros and other big, gorgeous sounds. Back in the day, we wouldn't have written anything like that. Before, we reined everything into a tight pop structure."

Recently the band members, except Hsu, have migrated to New York. That distance has given the members a renewed energy and actually strengthened the musical bond among them.

"It's funny [but now we say] let's be freer. Let's not worry about fitting songs into three minutes and let's allow the songs to be what they are. We are starting [to record another] new record and that's taking us in new directions than where we are now," Niederman said. "This newer stuff is really coming together. The goal for the new record is to record it and do it and release it this year."

This weekend's top music picks

Make sure to put these shows on this weekend's must-see list:

Thursday

Charlie Mars. The singer/songwriter tours behind his latest album. With Danni Rosner. **Details:** \$15; 8 p.m.; Jammin' Java, 227 Maple Ave. E., Vienna; 703-255-1566; jamminjava.com

Friday

Fools & Horses. The five rockers, hometown heroes hailing from Baltimore and Washington, take a break from recording the band's fourth studio album to give some of that new material a road test. With the Lake Effect, A Cool Stick and LVT. **Details:** \$10; 7 p.m.; Recher Theatre, 512 York Road, Towson

Saturday

Tea Leaf Green. The San Francisco jam band road tests some of the new material it plans to record this year. With Elmwood. **Details:** \$17; 9:30 Club, 815 V St. NW; 800-955-5566; 930.com

Sunday

Martina McBride and Trace Adkins. Two country legends team up for a country fest. **Details:** \$39.75 to \$69.75; Patriot Center, 4400 University Drive, Fairfax; ticketmaster.com

For more
OF THE BEST LOCAL NEWS, SPORTS,
OPINIONS AND PHOTOS, CLICK ON
washington
examiner.com

BEST FAMILY

1 Magic and Beyond: The wizardry of David Garrity will delight children. Sunglasses appear in a flash of fire, a table floats mysteriously through the air, objects materialize and vanish, hula hoops perform Hawaiian magic!



Where: National Theatre, 1321 Pennsylvania Ave. NW
When: 9:30 and 11 a.m. Saturday
Info: Free; 202-783-3372; nationaltheatre.org

2 "Puss'n'Boots": The classic fairy tale follows a clever cat who dons a pair of human boots and leads his poor homeless master to a life of luxury. When Puss puts on the boots, he becomes a fantastic dancer and uses his skills to amaze people to his master's advantage.
Where: Classika Theater, 4041 Campbell Ave., Arlington
When: 12:30 p.m. Saturday and Sunday; extra shows at 3:30 p.m. Saturday and Feb. 6, 14 and 20; through March 14
Info: For ages 4 and older; classika.org

3 Story Theatre - "Wake Up, Brother Bear!"

This new, experiential theater piece is an intimate introduction to live theater for children ages 2 to 5 and their teachers or caregivers. The audience is invited into the world of Brother and Sister Bear as they discover the seasons of the year. Children may join in the action throughout the show.
Where: Reeve Studio Theatre, Imagination Stage, 4908 Auburn Ave., Bethesda
When: 10:30 and 11:45 a.m. Thursday to Saturday, 10:30 a.m. Feb. 2 to 5.
Info: \$7; 301-280-1660; imaginationstage.org

4 Puzzle Party: Bring the kids and get ready for National Puzzle Day. Cozy up by the fireside with your family and a big assortment of wildlife and

nature jigsaw puzzles. You can bring your own puzzle or use the center's. Families with children 3 and older.
Where: Gulf Branch Nature Center, 3608 Military Road, Arlington
When: 5 to 7:30 p.m. Friday, 1 to 4 p.m. Saturday
Info: Free; registration necessary at 703-228-4747; program Nos. 623505-F, 623505-G

5 Bringing Otters Back: Otters are among the most amazing and playful animals in the world. Could they return to Virginia on a permanent basis? See what you can do to make a difference.
Where: Meet at Long Branch Nature Center, 625 S. Carlin Road, Arlington
When: 2:30 to 3:30 p.m. Saturday
Info: Reservations required at 703-228-4747; program No. 623602-G

—Barbara Mackay